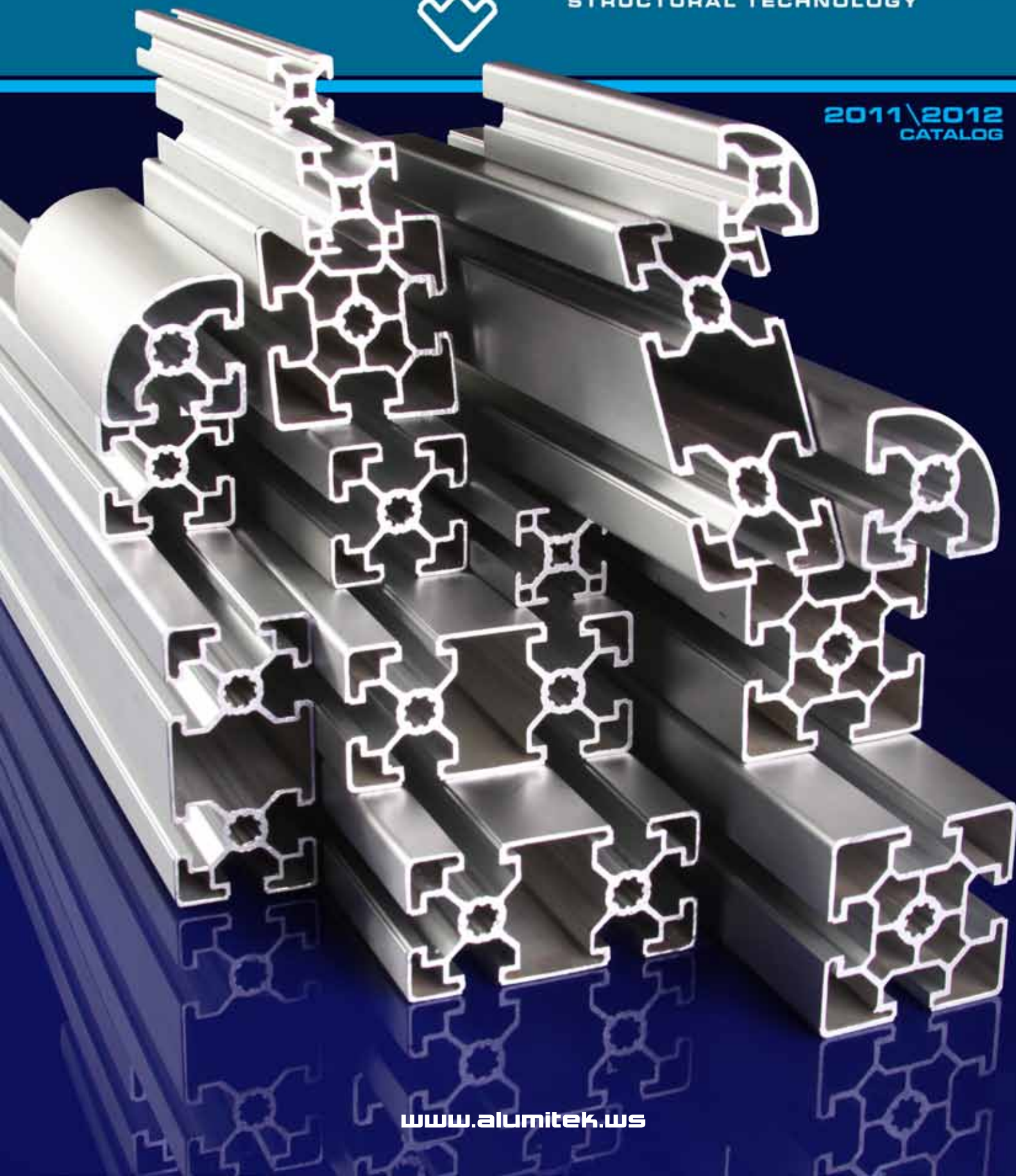




# Alumitek®

STRUCTURAL TECHNOLOGY

2011\2012  
CATALOG



[www.alumitek.ws](http://www.alumitek.ws)



### QUALITY POLICY

Alumitek designs, manufactures and distributes high quality supplies for structural engineering, securing by these means, being the best provider selected by the customers according to their needs and requirements. The total satisfaction of each customer deserves our highest commitment, and turns their expectations into our number one priority.

### MISSION:

Alumitek offers an innovative experience in industrial supplies by providing essential elements such as: high-quality products, the optimal solution on all given requirements, a personalized and professional service, the fastest response as well as an efficient delivery time, and of course, and the lowest cost.

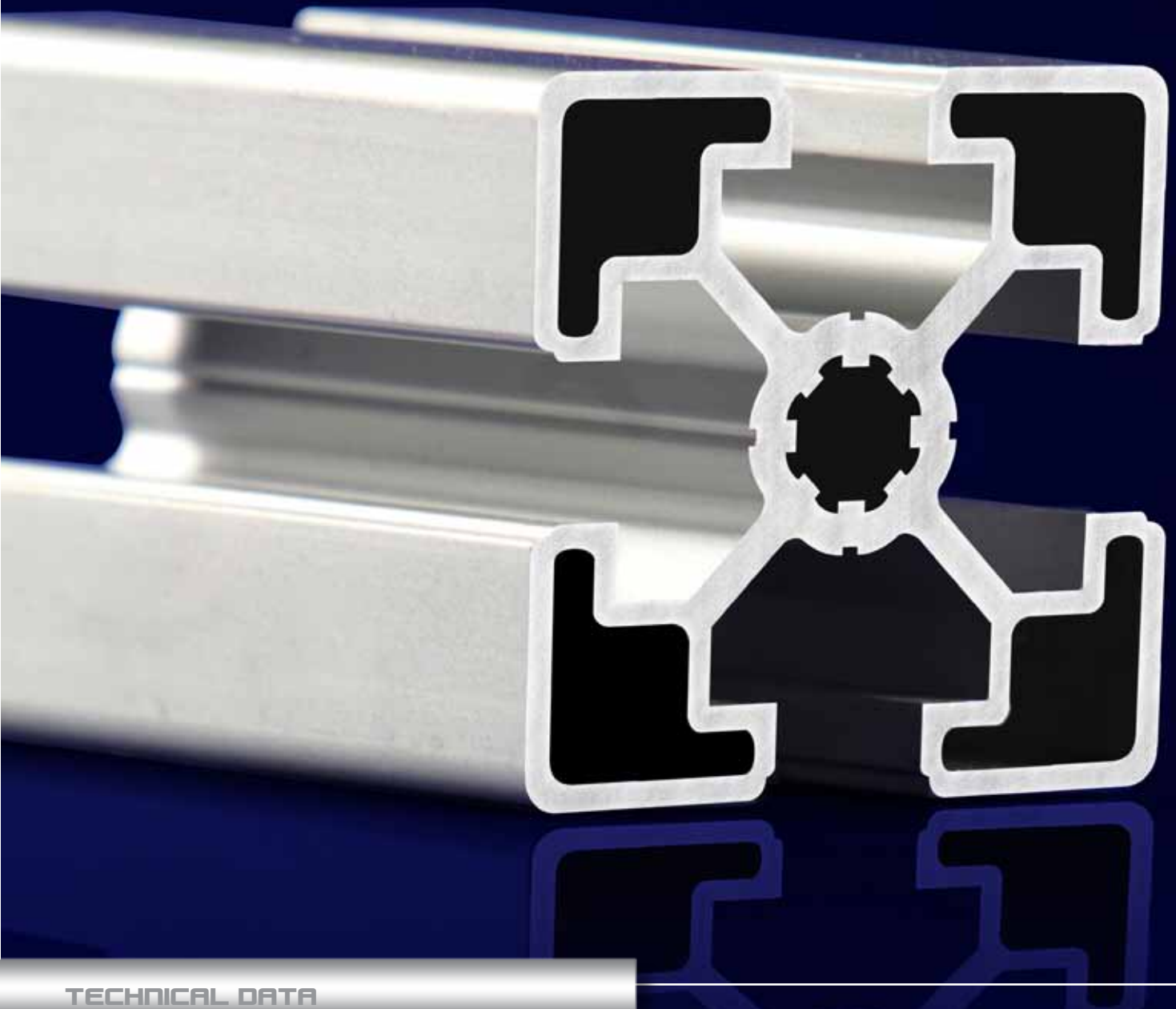
### VISION:

To be the leading company in the design of structural technologies, exceeding the expectations of our clients and competitors, developing engineering through continuous improvement in processes, products and services. Alumitek aims to be customer's natural provider due to this company's high quality standards.





<b>INDEX:</b>		<b>BRACKETS:</b>	<b>8</b>
<b>PROFILES:</b>	<b>4</b>	<b>ACCESSORIES:</b>	<b>9</b>
<b>TECHNICAL DATA:</b>	<b>4</b>	<b>FLOOR TO FRAME CONNECTORS</b>	<b>9</b>
<b>UNIVERSAL FASTENER:</b>	<b>7</b>	<b>CASTERS:</b>	<b>9</b>



TECHNICAL DATA

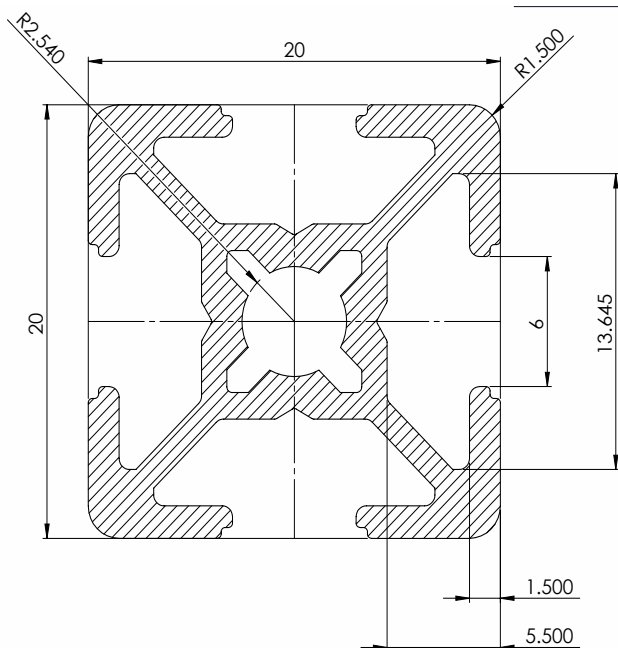
## PROFILES:

WITH THE OBJECTIVE TO SATISFY ALL KINDS OF REQUIREMENTS, WE SUPPLY A WIDE RANGE OF PROFILES' SIZES FOR COUNTLESS APPLICATIONS AND FOR ALL KINDS OF LOADS.



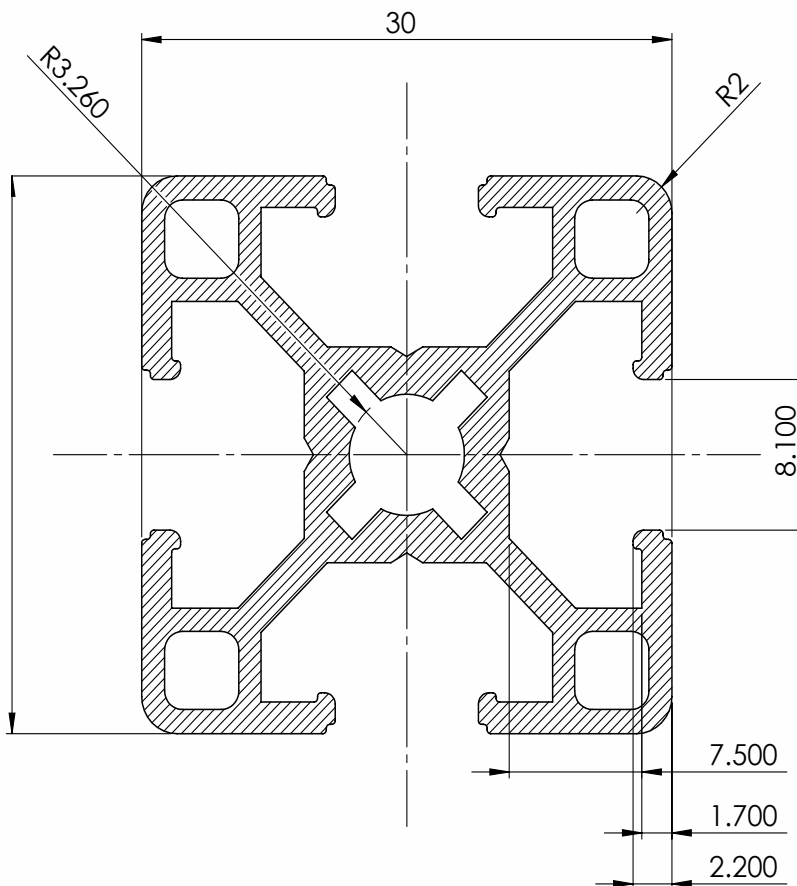
## PROFILE 20 X 20

PART NUMBER	777-2020
MATERIAL	6105-T5 Aluminum
SURFACE FINISH	Clear anodized
WEIGHT	.40 KGS/ MT
STOCK LENGHT	3.00 MTS
PERIMETER	13.24 cm
AREA	1.496 cm <sup>2</sup>
CIRCLE	22.243 mm
MOMENT OF INERTIA	IX: 0.620 cm <sup>4</sup> IY: 0.620 cm <sup>4</sup>
MASS:	0.180 kg



## PROFILE 30 X 30

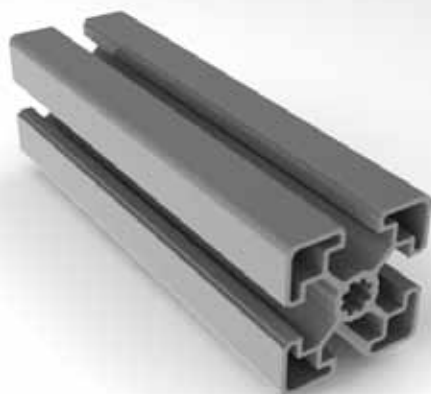
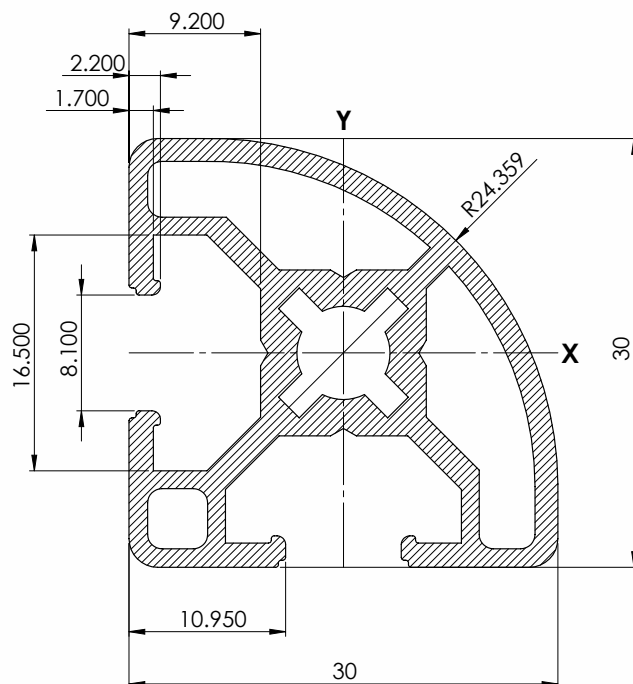
PART NUMBER	777-3030
MATERIAL	6105-T5 Aluminum
SURFACE FINISH	Clear anodized
WEIGHT	.774 KGS/ MT
STOCK LENGHT	6.10 MTS
PERIMETER	23.61 cm
AREA	2.837 cm <sup>2</sup>
CIRCLE	40.767 mm
MOMENT OF INERTIA	Ix: 2.837 cm <sup>4</sup> Iy: 2.837 cm <sup>4</sup>
MASS:	0.324 Kg





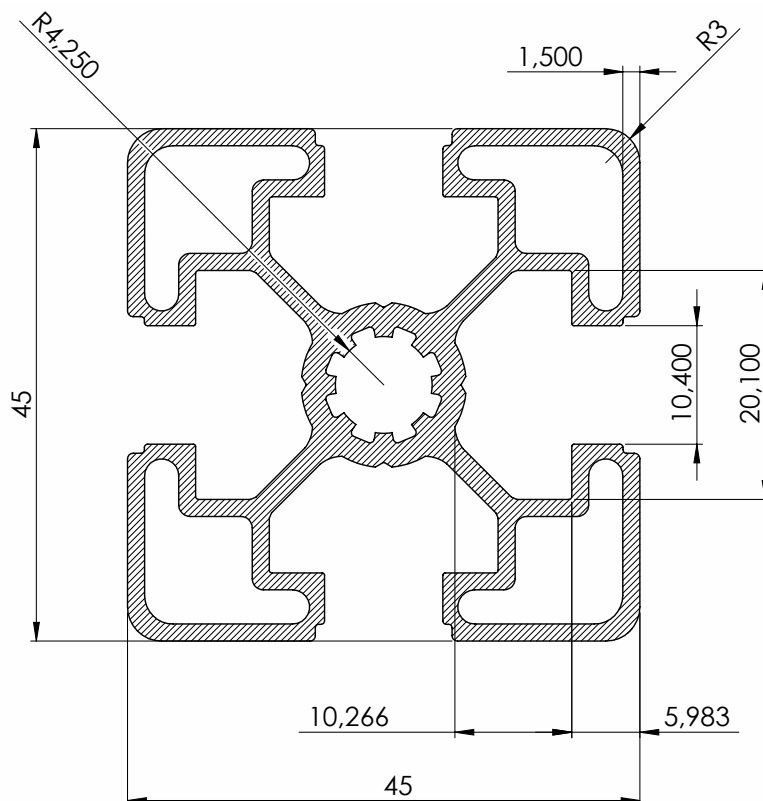
## PROFILE 30 X 30 R

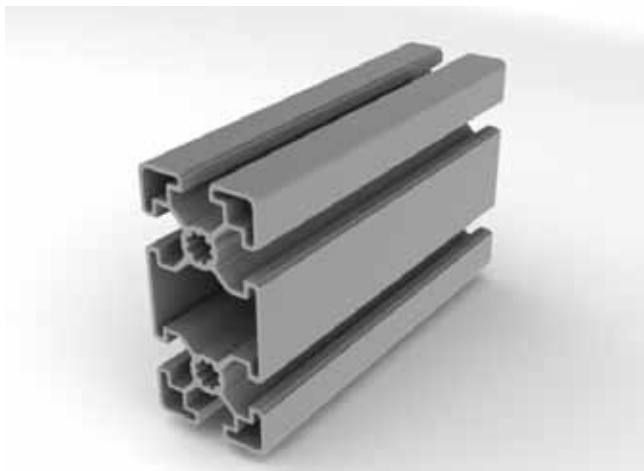
PART NUMBER	777-30R
MATERIAL	6105-T5 Aluminum
SURFACE FINISH	Clear anodized
WEIGHT	1.425 KGS/ MT
STOCK LENGHT	6.10 MTS
PERIMETER	35.37 cm
AREA	2.694 cm <sup>2</sup>
CIRCLE	40.767 mm
MOMENT OF INERTIA	Ix: 1.712 cm <sup>4</sup>
	Iy: 2.524 cm <sup>4</sup>
MASS:	0.324 Kg



## PROFILE 45 X 45

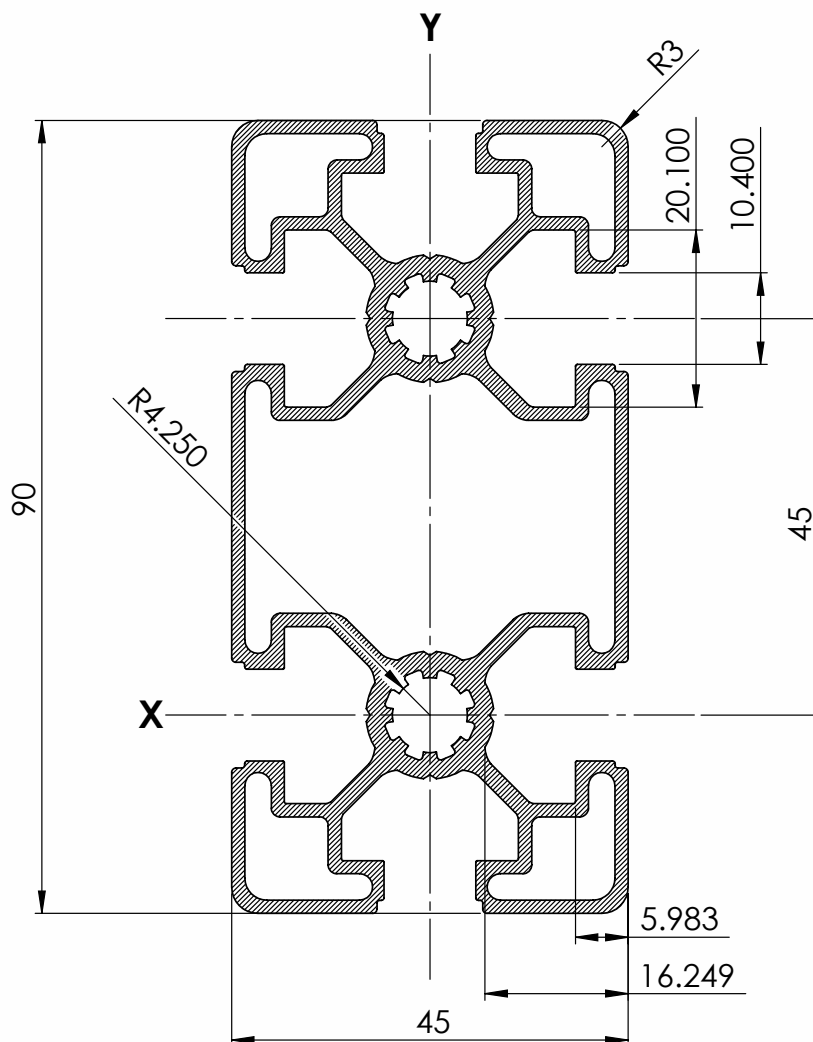
PART NUMBER	777-4545
MATERIAL	6105-T5 Aluminum
SURFACE FINISH	Clear anodized
WEIGHT	1.425 KGS/ MT
STOCK LENGHT	6.10 MTS
PERIMETER	35.37 cm
AREA	5.223 cm <sup>2</sup>
CIRCLE	61.1632 mm
MOMENT OF INERTIA	Ix: 10.125 cm <sup>4</sup>
	Iy: 10.125 cm <sup>4</sup>
MASS:	0.629 Kg





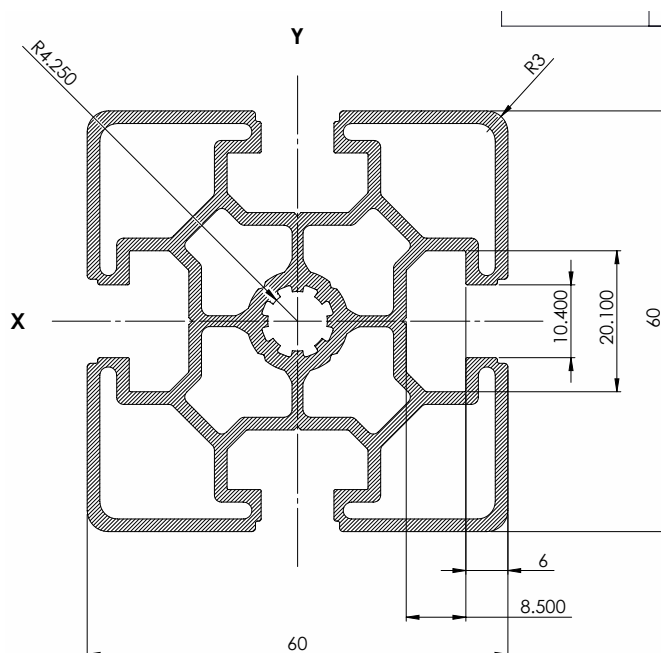
## PROFILE 45 X 90

PART NUMBER	777-4590
MATERIAL	6105-T5 Aluminum
SURFACE FINISH	Clear anodized
WEIGHT	2.389 KGS/ MT
STOCK LENGHT	6.10 MTS
PERIMETER	53.32 cm
AREA	8.754 cm <sup>2</sup>
CIRCLE	98.6028 mm
MOMENT OF INERTIA	Ix: 18.108 cm <sup>4</sup>
	Iy: 72.911 cm <sup>4</sup>
MASS:	1.054 Kg



## PROFILE 60 X 60

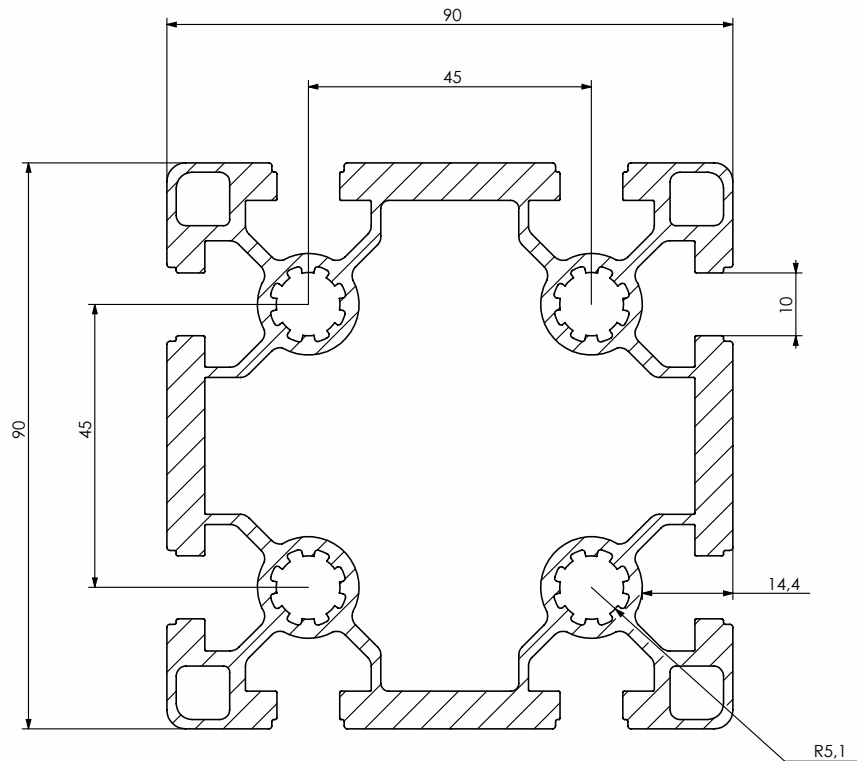
PART NUMBER	777-6060
MATERIAL	6105-T5 Aluminum
SURFACE FINISH	Clear anodized
WEIGHT	2.389 KGS/ MT
STOCK LENGHT	6.10 MTS
PERIMETER	53.32 cm
AREA	9.199 cm <sup>2</sup>
CIRCLE	98.6028 mm
MOMENT OF INERTIA	Ix: 30.790 cm <sup>4</sup>
	Iy: 30.790 cm <sup>4</sup>
MASS:	1.108 Kg





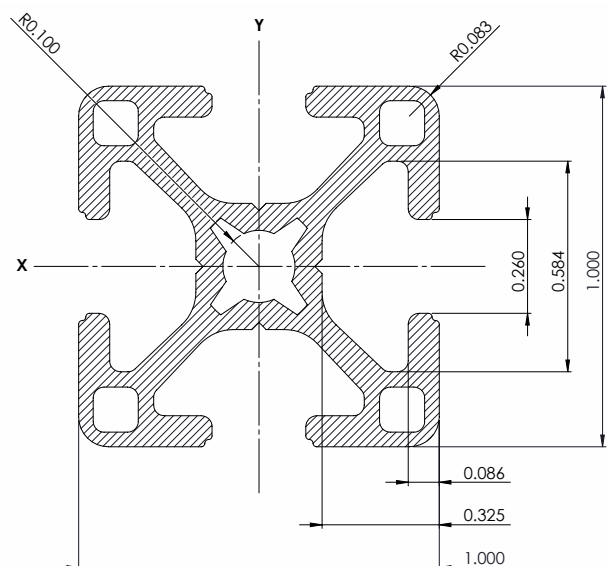
## PROFILE 90 X 90

PART NUMBER	777-9090
MATERIAL	6105-T5 Aluminum
SURFACE FINISH	Clear anodized
WEIGHT	6.3 KGS/ MT
STOCK LENGHT	3.5 MTS
PERIMETER	
AREA	19.74 cm <sup>2</sup>
CIRCLE	
MOMENT OF INERTIA	lx: 187.67 cm <sup>4</sup>
	ly: 190.04 cm <sup>4</sup>
MASS:	30 Kg



## PROFILE 1" X 1"

PART NUMBER	777-1010E
MATERIAL	6105-T5 Aluminum
SURFACE FINISH	Clear anodized
WEIGHT	2.389 KGS/ MT
STOCK LENGHT	6.10 MTS
PERIMETER	53.32 cm
AREA	0.356 in <sup>2</sup>
CIRCLE	98.6028 mm
MOMENT OF INERTIA	lx: 0.036 in <sup>4</sup>
	ly: 0.036 in <sup>4</sup>
MASS:	0.609 pounds

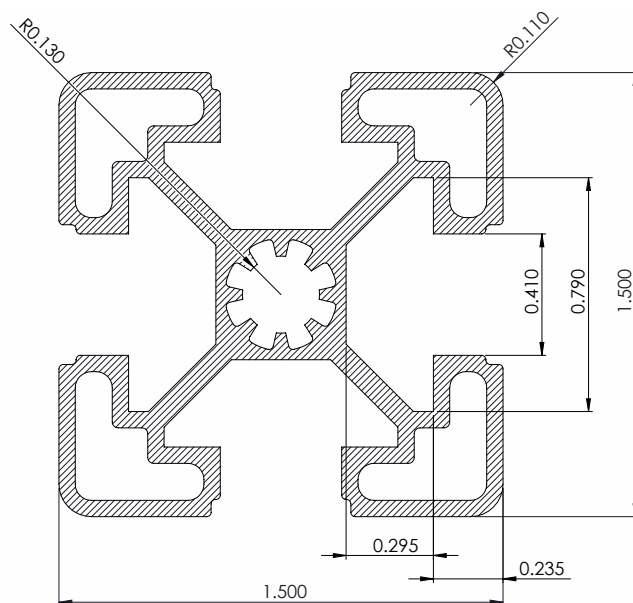






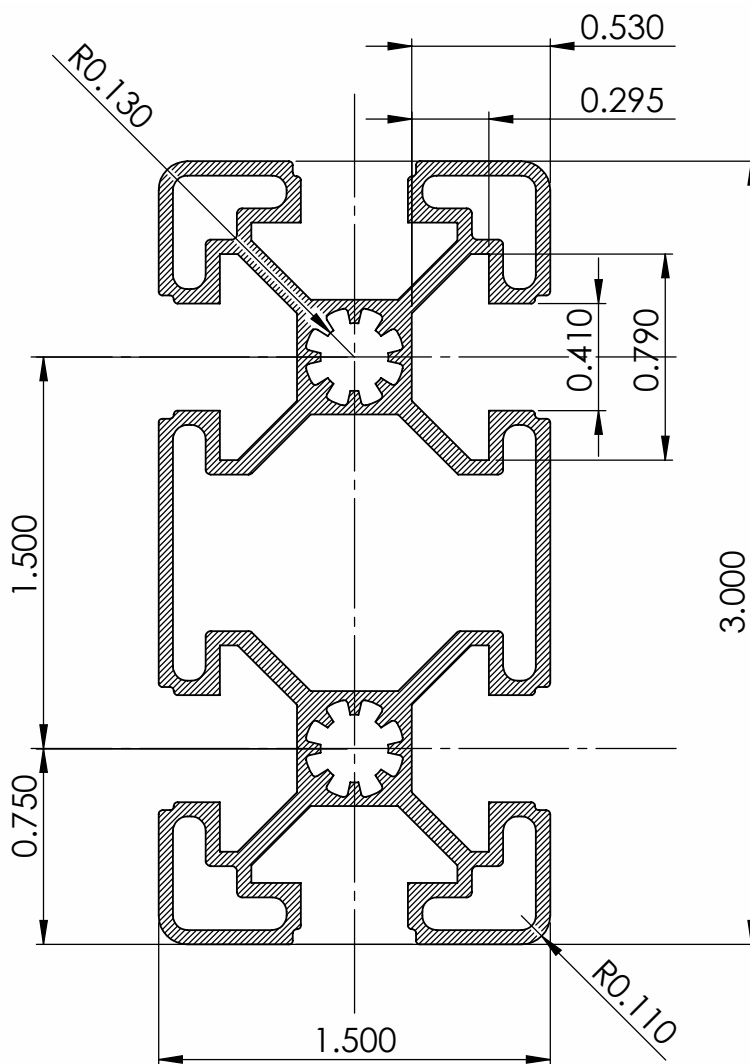
### PROFILE 1.5" X 1.5"

PART NUMBER	777-1515E
MATERIAL	6105-T5 Aluminum
SURFACE FINISH	Clear anodized
WEIGHT	2.389 KGS/ MT
STOCK LENGHT	6.10 MTS
PERIMETER	53.32 cm
AREA	0.606 in <sup>2</sup>
CIRCLE	98.6028 mm
MOMENT OF INERTIA	Ix: 0.134 in <sup>4</sup>
	Iy: 0.134 in <sup>4</sup>
MASS:	1.037 pounds



### PROFILE 1.5" X 3"

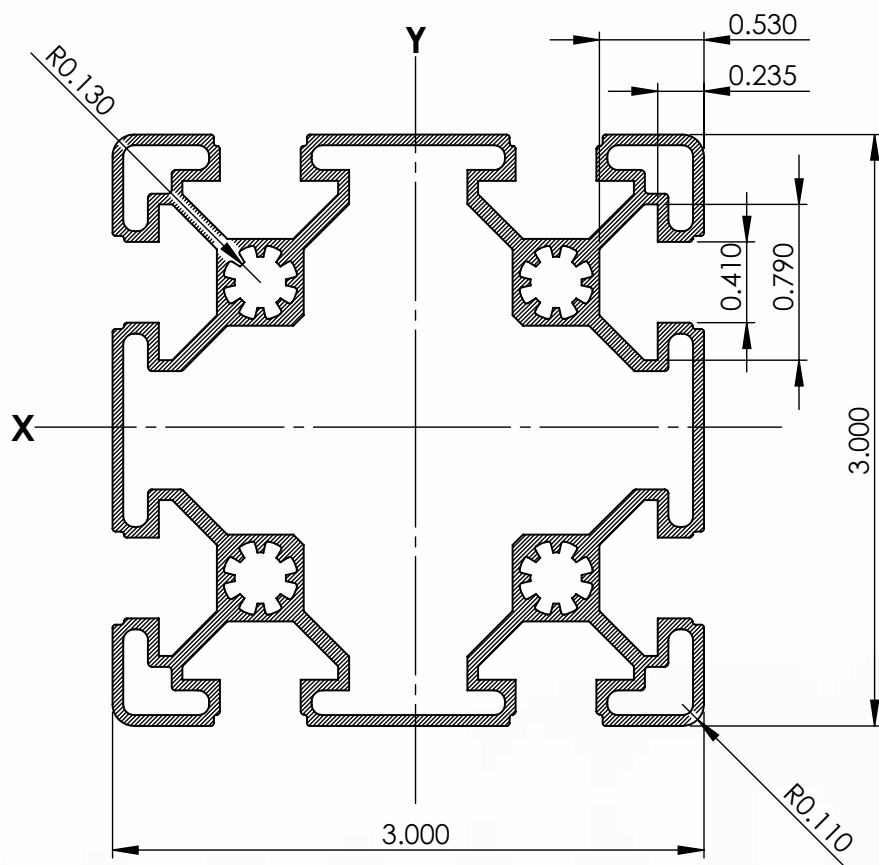
PART NUMBER	777-1530E
MATERIAL	6105-T5 Aluminum
SURFACE FINISH	Clear anodized
WEIGHT	2.389 KGS/ MT
STOCK LENGHT	6.10 MTS
PERIMETER	53.32 cm
AREA	1.018 cm <sup>2</sup>
CIRCLE	98.6028 mm
MOMENT OF INERTIA	Ix: 0.238 in <sup>4</sup>
	Iy: 0.945 in <sup>4</sup>
MASS:	1.743 pounds

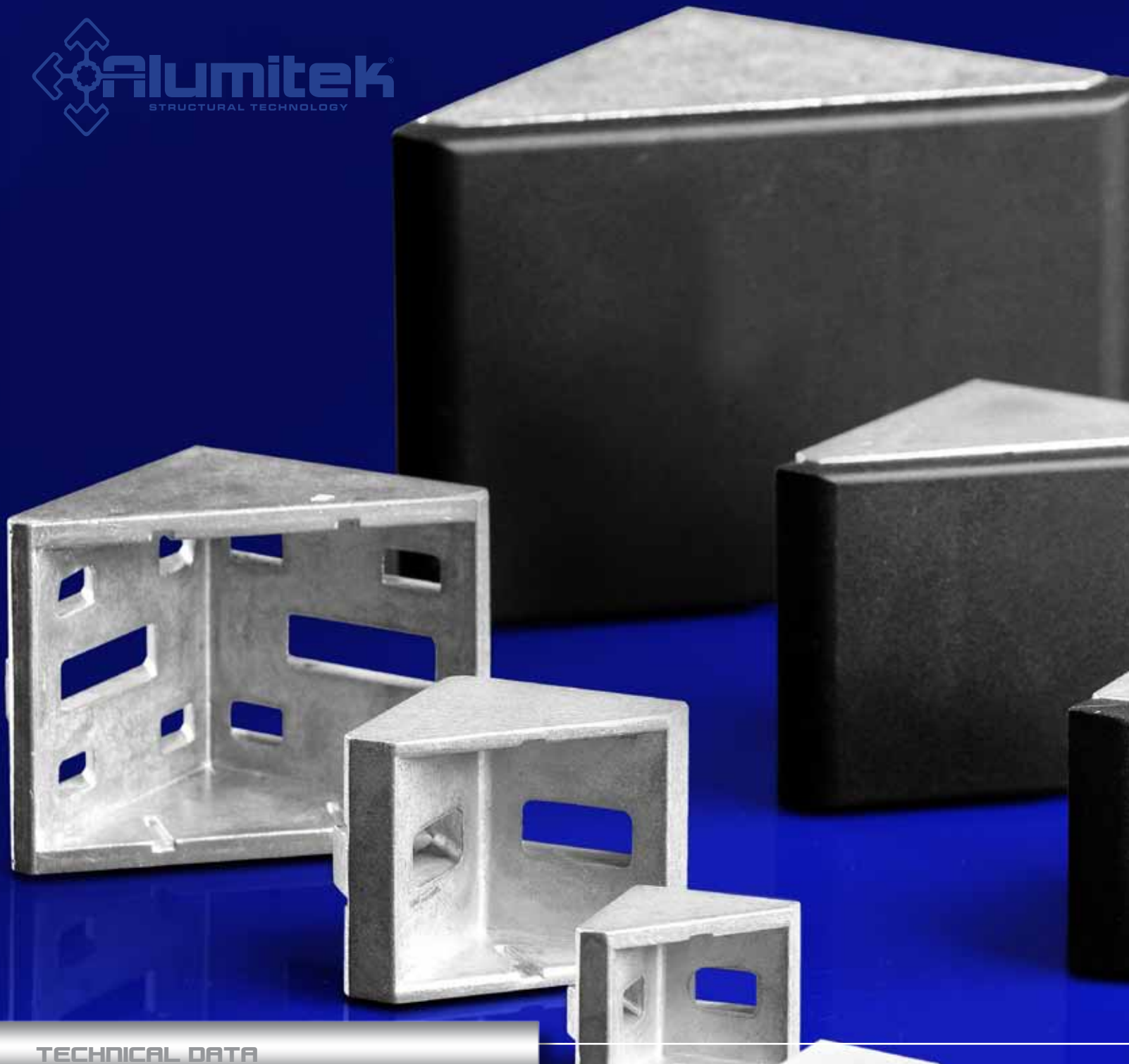




### PROFILE 3" X 3"

PART NUMBER	777-3030E
MATERIAL	6105-T5 Aluminum
SURFACE FINISH	Clear anodized
WEIGHT	2.389 KGS/ MT
STOCK LENGHT	6.10 MTS
PERIMETER	53.32 cm
AREA	1.592 in <sup>2</sup>
CIRCLE	98.6028 mm
MOMENT OF INERTIA	Ix: 1.592 in <sup>4</sup>
	Iy: 1.592 in <sup>4</sup>
MASS:	2.615 pounds





TECHNICAL DATA

## BRACKETS

WE PROVIDE GUSSET ELEMENTS WITH AUTO-CENTER GUIDES FOR  
FASTER AND PRECISE MOUNTING IN ALL DIFFERENT SERIES.

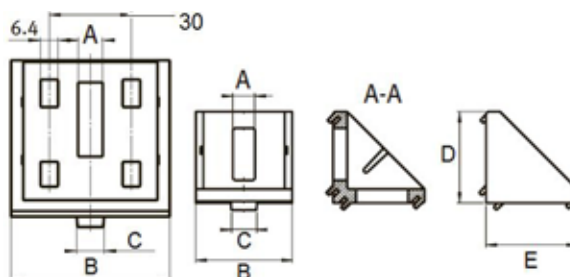
## GUSSET:

MATERIAL: DIE CAST ALUMINUM



GUSSET	PART NUMBER	A	B	C	D	E
GUSSET 20 x 20 mm	ALG2020	4.5	18.0	SLOT06	18.0	18.0
GUSSET 30 x 30 mm	ALG3030	6.4	28.0	SLOT 08	27.0	27.0
GUSSET 45 x 45 mm	ALG4545	10.0	42.0	SLOT 10	42.0	42.0
GUSSET 60 x 60 mm	ALG6060	10.0	58.0	SLOT 10	57.0	57.0
GUSSET 45 x 90 mm	ALG4590	10.0	43.0	SLOT 10	86.0	86.0
GUSSET 90 x 90 mm	ALG9090	10.0	88.0	SLOT 10	86.0	86.0

Note: All Gussets Include Fasteners

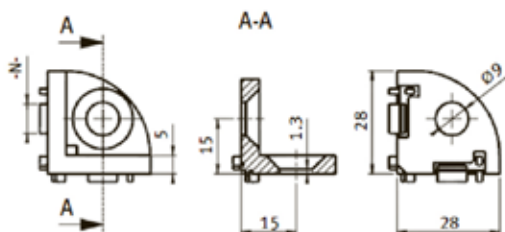
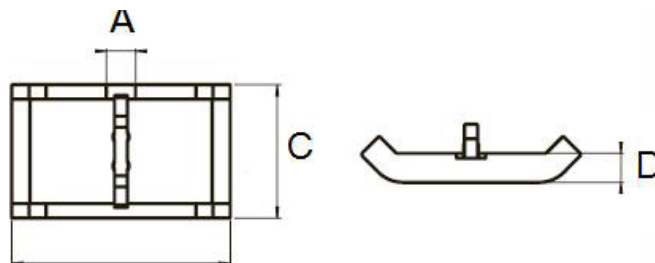


## END CAP GUSSET:

MATERIAL: PA6



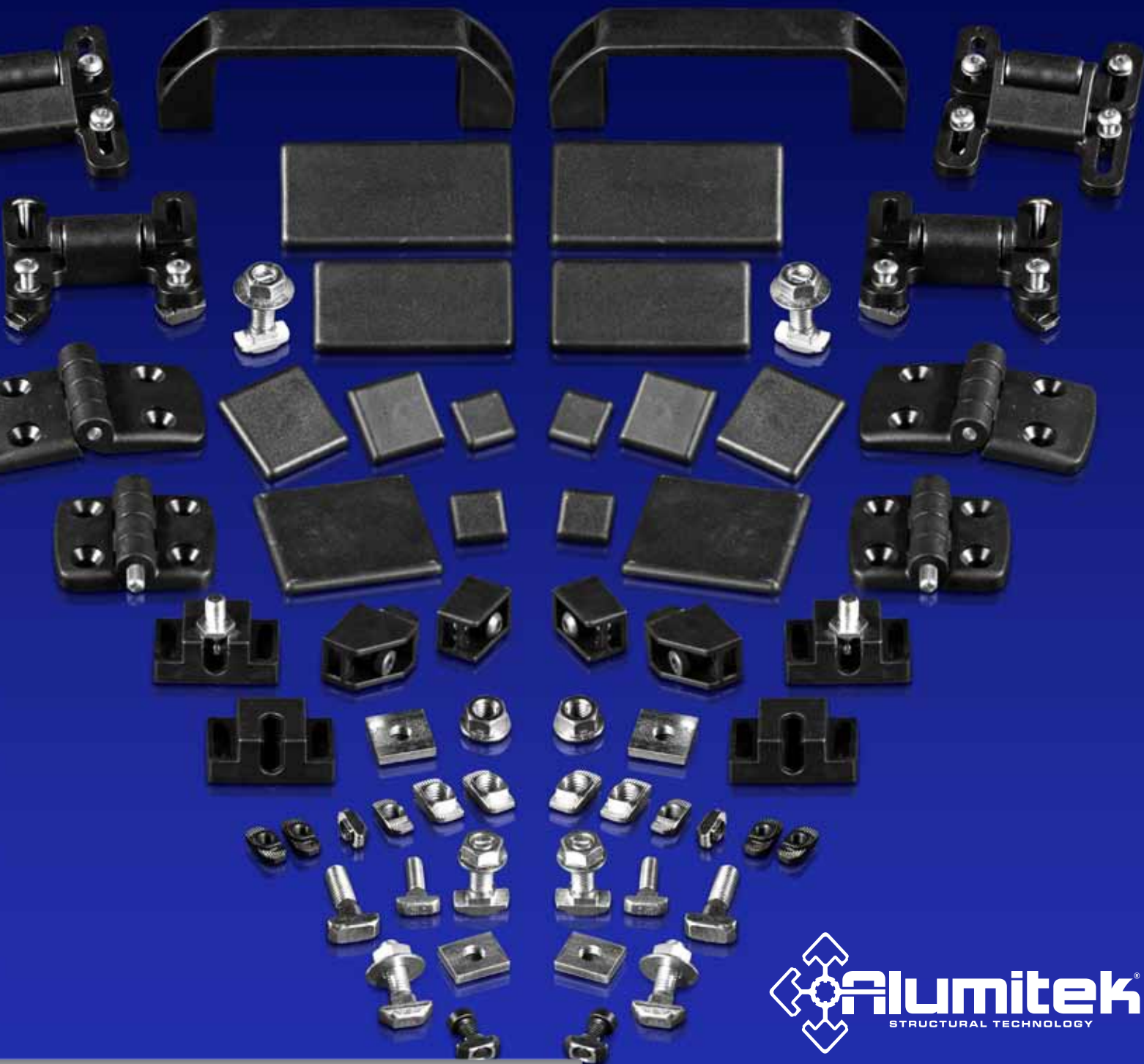
GUSSET	PART NUMBER	A	B	C	D
END CAP GUSSET 20 x 20 mm	ALECG2020	5.0	28.2	17.6	5.0
END CAP GUSSET 30 x 30 mm	ALECG3030	6.0	45.2	27.6	6.0
END CAP GUSSET 45 x 45 mm	ALECG4545	6.0	70.0	40.0	8.5
END CAP GUSSET 60 x 60 mm	ALECG6060	6.0	87.5	57.6	7.0
END CAP GUSSET 90 x 90 mm	ALECG9090	6.0	133.0	87.6	7.0



## 3 WAY CONNECTOR ANGLE 30x30 PART NUMBER

3 WAY CONNECTOR CAST 30x30	AL3WC
SQUARE COVER CAP 30	AL3WCSC
ROUND COVER CAP 30	AL3WCRC





TECHNICAL DATA

## ACCESORIES & FASTENER

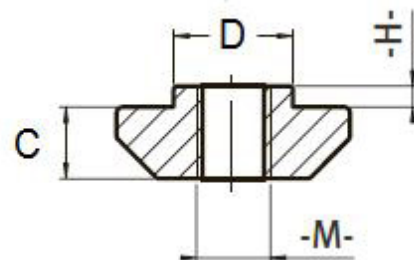
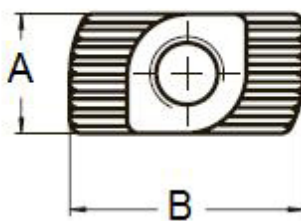
OUR WIDE RANGE OF ACCESSORIES AND COMPONENTS IMPROVE AND EASE THE DESIGNS' ERGONOMICS. ALSO, SPECIALIZED FASTENERS FACILITATE ANY PROFILES' ASSEMBLY.



## T-NUT

MATERIAL: STEEL

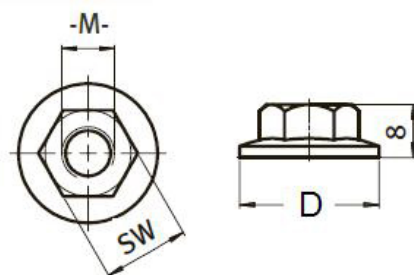
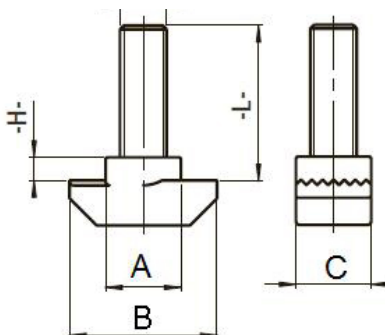
T-NUT STEEL	PART NUMBER	M	H	A	B	C	D
T-NUT 6 SLOT M4	ALTN06M4	M-4	1.0	5.7	11.5	3.2	5.7
T-NUT 8 SLOT M6	ALTN08M6	M-6	1.5	7.7	16	4.5	7.7
T-NUT 10 SLOT M6	ALTN10M6	M-6	3.0	9.7	19	5.8	9.7
T-NUT 10 SLOT M8	ALTN10M8	M-8	3	9.7	19	5.8	9.7



## T-BOLT

MATERIAL: STEEL

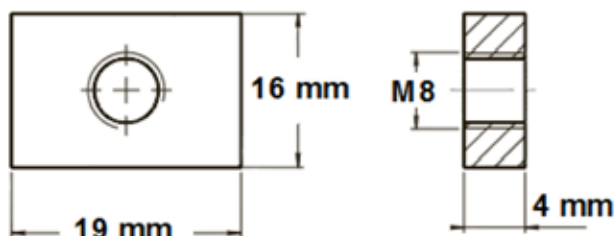
T-BOLT STEEL	PART NUMBER	M	H	A	B	C	D	L
T-BOLT 8 SLOT M6	ALTB08M6	M-6	3.0	7.7	16.0	7.7		20.0
T-BOLT 10 SLOT M8	ALTB10M8	M-8	3.0	9.7	19.0	9.7		25.0
HEX NUT M6	ALHNM6	M-6					16.0	
HEX NUT M8	ALHNM8	M-8					21.0	



## SQUARE NUT

MATERIAL: ZINC PLATED STEEL

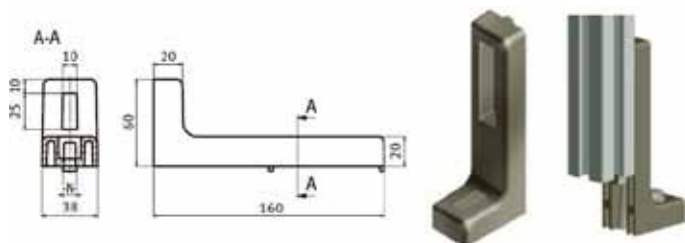
SQUARE NUT	PART NUMBER
SQUARE NUT M8	ALSNM8



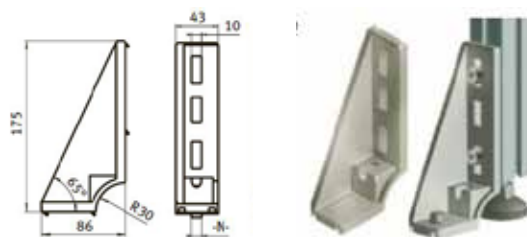
END CAP 20x20 mm	ALEC20
END CAP 30x30 mm	ALEC30
END CAP 30x30R mm	ALEC30R
END CAP 45x45 mm	ALEC45
END CAP 45x90 mm	ALEC4590
END CAP 60x60 mm	ALEC60
END CAP 90x90 mm	ALEC90
END CAP 1x1 in	ALEC1x1
END CAP 15x15 in	ALEC1515
END CAP 15x3 in	ALEC15x3
END CAP 3x3 in	ALEC3x3



## FLOOR TO FRAME CONNECTORS



FLOOR LEVEL FRAME BLACK / ALFLBLACK



FLOOR LEVEL FRAME CAST / ALFLFCAST

## FLOOR LEVEL FRAME

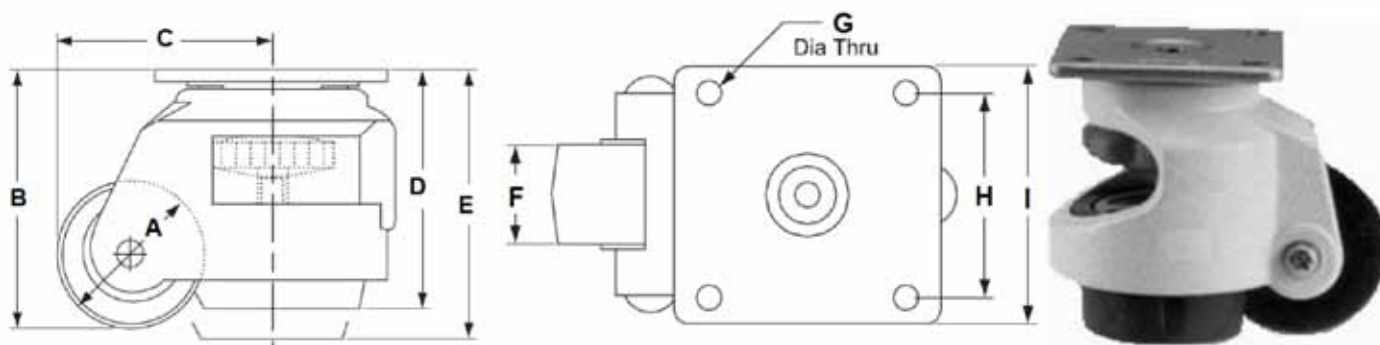


FLOOR LEVEL FRAME 45MM  
FLOOR LEVEL FRAME 60mm

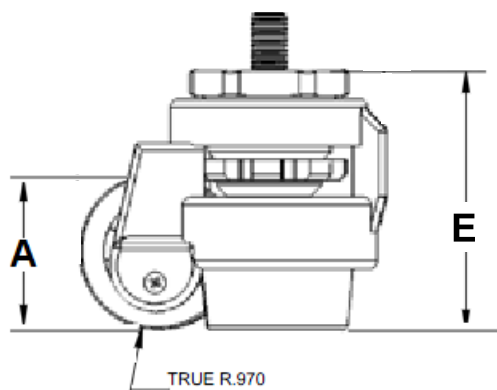
ALFLF 45 mm  
ALFLF 60 mm

## CASTERS:

CASTERS	PART NUMBER	D(mm)	H(mm)	LOAD / kgs
FIXED CASTER PLATE	ALFCP63	63.0	92.0	80.0
FIXED CASTER PLATE	ALFCP75	75.0	107.0	100.0
FIXED CASTER PLATE	ALFCP100	100.0	130.0	135.0
BRAKE CASTER PLATE	ALBCP63	63.0	92.0	80.0
BRAKE CASTER PLATE	ALBCP75	75.0	107	100.0
BRAKE CASTER PLATE	ALBCP100	100.0	130	135.0



LEVELING CASTER	PART NUMBER	A	B	C	D	E	F	G	H	I
LEVELING CASTER SQUARE PLATE 2.5"	ALLCSP25	63.5	100	77	92	118	29	M8	70	90
LEVELING CASTER SQUARE PLATE 3"	ALLCSP3	91.5	115	85	100	125	31	M8	90	120



LEVELING CASTER	PART NUMBER	A	B	C	D	E	F
LEVELING CASTER HEX PLATE 2.5"	ALLCSH25	63.5	100	77	92	118	29
LEVELING CASTER HEX PLATE 3"	ALLCSH3	91.5	115	85	100	125	31





## EXPANDED METAL PANEL:

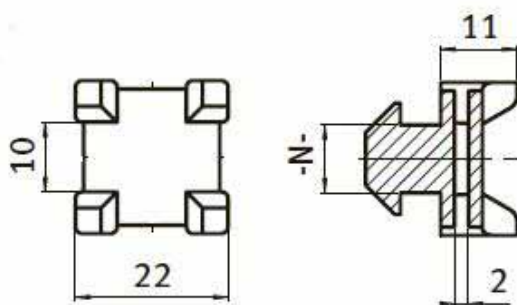
EXPANDED METAL	PART NUMBER	D(mm)	H(mm)
EXPANDED METAL PANEL	ALM1010	4 FT	8 FT0

## PIVOT JOIN CONNECTOR:

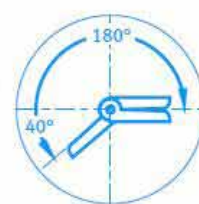
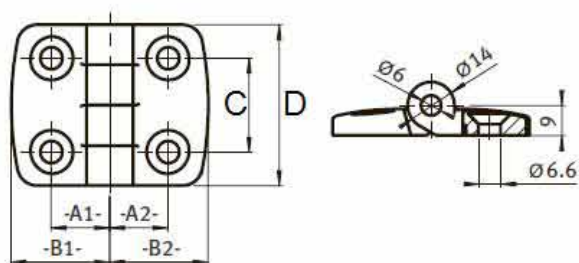


PIVOT JOIN CONNECTOR	PART NUMBER	N	A	B	C	D	E
PIVOT JOIN CONNECTOR	ALPJC30	8 SLOT	22.5	7.0	30.0	2.5	8.3
PIVOT JOIN CONNECTOR	ALPJC45	10 SLOT	30.0	2.0	45.0	1.8	14.0
PIVOT JOIN CONNECTOR W/ HANDLED	ALPJCH30	8 SLOT	22.5	7.0	30.0	2.5	8.3
PIVOT JOIN CONNECTOR W/ HANDLED	ALPJCH45	10 SLOT	30.0	2.0	45.0	1.8	14.0

## CABLE BLOCK:

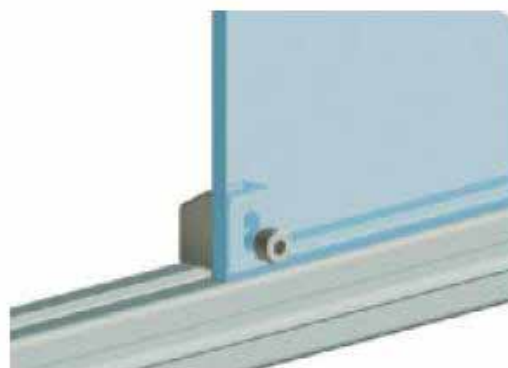
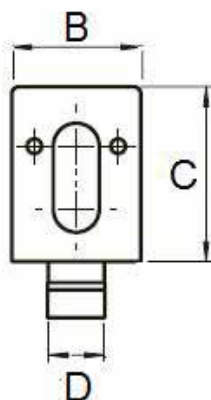


CABLE CROSS	PART NUMBER	N
CROSS CABLE 08	ALCC08	SLOT 08
CROSS CABLE 10	ALCC10	SLOT 10



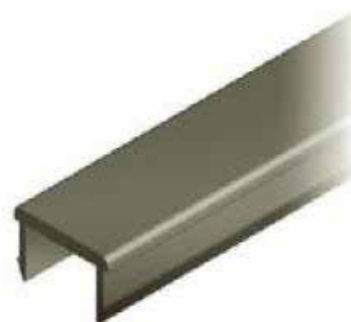
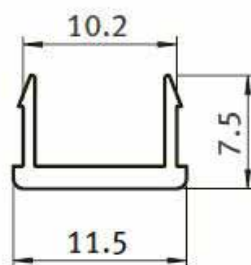
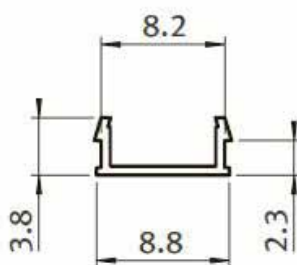
## PANELS AND DOOR: HINGES 30X30

PLASTIC HINGES	PART NUMBER	A1	A2	B1	B2	C	D
STANDARD HINGE 30 X 30	ALSH3030	17.5	17.5	29.5	29.5	28.0	48.0
STANDARD HINGE 30 X 45	ALSH3045	17.5	27.5	29.5	43.5	28.0	48.0
STANDARD HINGE 45 X 45	ALSH4545	25.0	25.0	43.5	43.5	28.0	48.0
STANDARD HINGE 60 X 30	ALSH6030	17.5	32.5	29.5	57.5	28.0	48.0



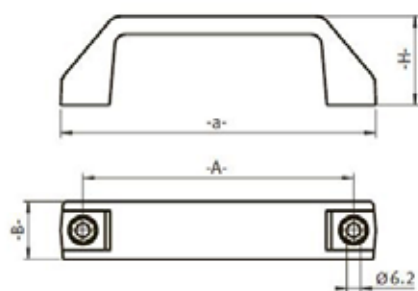
## PANEL MOUNTING

PANEL MOUNTING	PART NUMBER	A	B	C	D
PANEL MOUNTING 08 SLOT	ALPM08	18.5	18.5	25.0	SLOT 08
PANEL MOUNTING 10 SLOT	ALPM10	29.5	43.5	28.0	SLOT 10



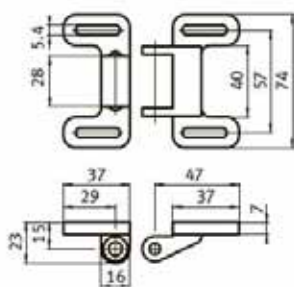
## COVER SLOT:

COVER SLOT BLACK	PART NUMBER
COVER SLOT 08	ALCS08
COVER SLOT 10	ALCS10



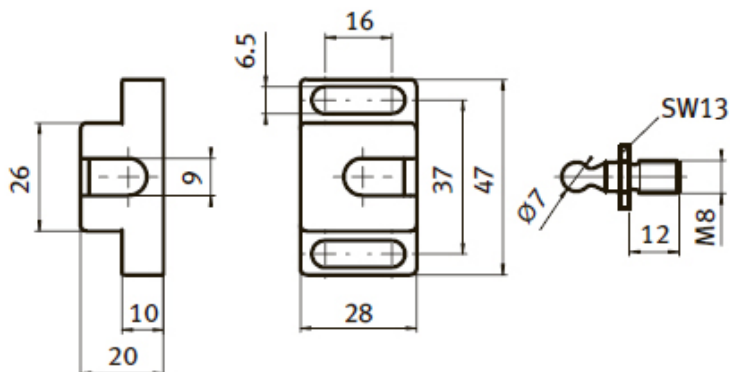
## HANDLES:

STANDARD HANDLE	PART NUMBER	a	A	B	H
HANDLE SMALL	ALHS	112.0	93.0	21.0	36.0
HANDLE MEDIUM	ALHM	142.0	122.0	26.0	40.0
HANDLE LARGE	ALHL	170.0	152.0	28.0	52.0



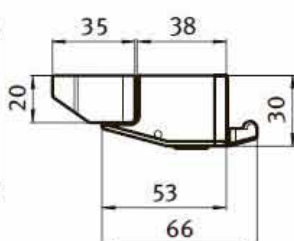
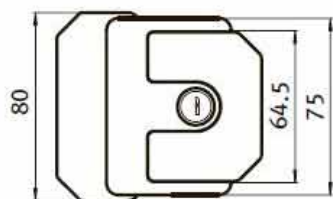
## DOUBLE BALL CATCH:

DOUBLE BALL CATCH	PART NUMBER
DOUBLE BALL CATCH	ALDBC



## BALL CATCH:

BALL CATCH	PART NUMBER
BALL CATCH	ALBC



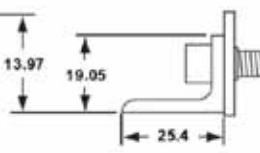
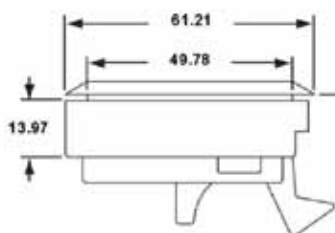
## LATCHES:

### LATCH

LATCH W/KEY

### PART NUMBER

ALLWK

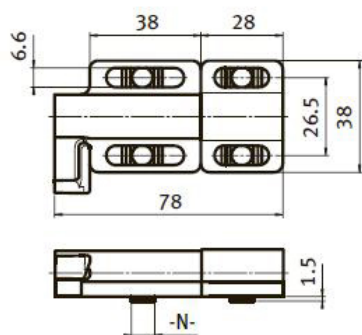


### LOCKING HANDLE

LOCKING HANDLE

### PART NUMBER

ALLH



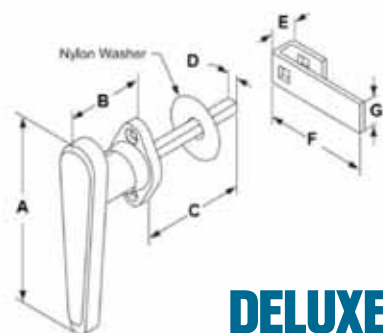
## DOOR LATCH:

### DOR LATCH

DOOR LATCH

### PART NUMBER

ALDL



## DELUXE LOCKING HANDLE

### DELUXE LOCKING HANDLE

DELUXE LOCKING HANDLE

### PART NUMBER

ALDLH

A 111

B 50

C 66

D 8

E 19

F 70

G 70



**DISTRIBUTED BY:**



**[www.alumitek.ws](http://www.alumitek.ws)**